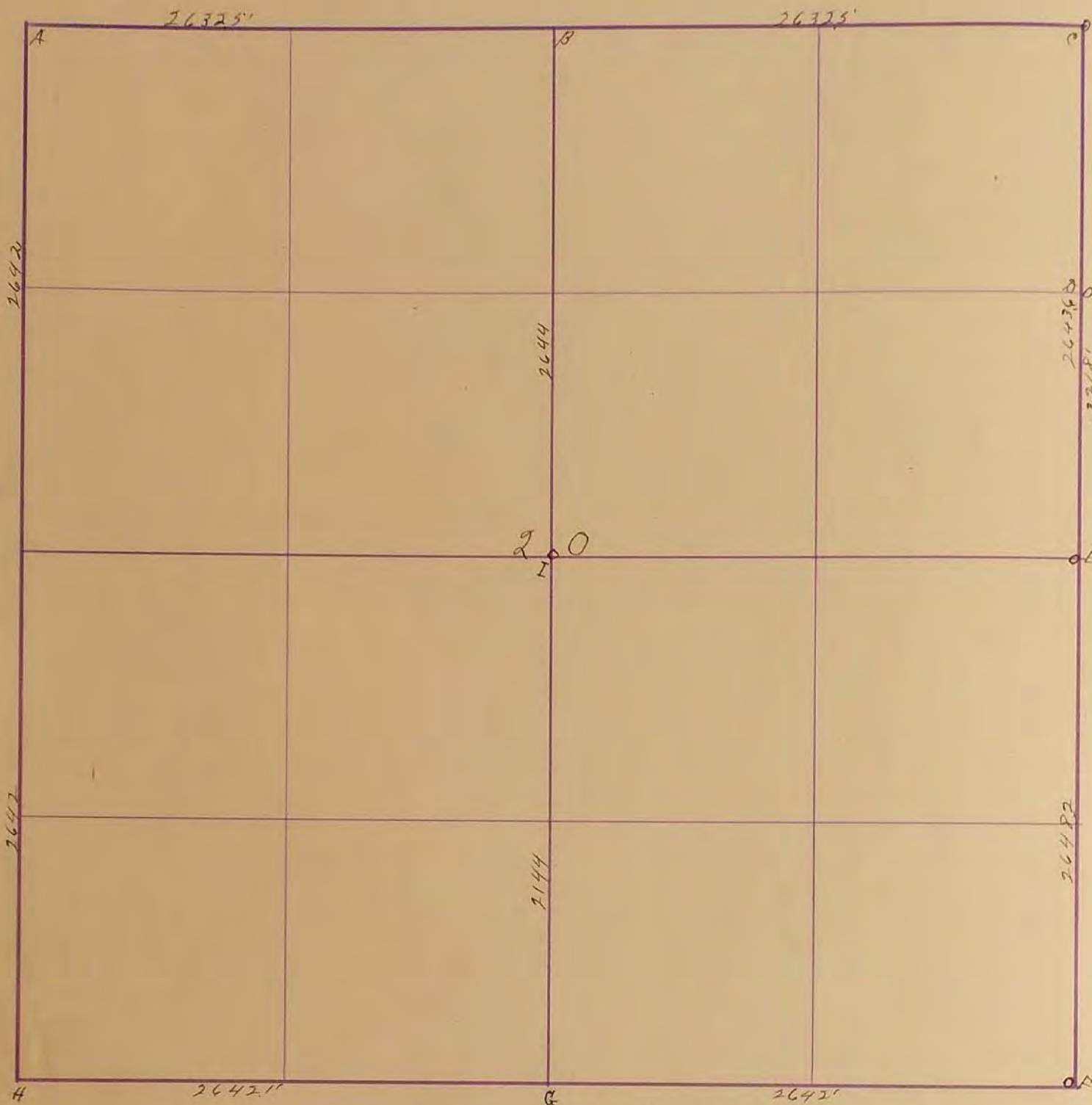


SURVEYOR'S RECORD

Section 20

Township 108

Range 41



20
21

A = Iron stake in grade, put in on stone previously set, relocated by testimony of Peter Hobert and others by J.R. Johnston Co. Sur. filed Dec. 1914

B. Stone set equal distance on line between C & A. Set by J.R. Johnston Co. Surveyor May 1915

C = Stone with L cut in it in road. Relocated by testimony of J.R. Johnston and others

D = 18 stone set equal distant on fence line between C & B. by J.R. Johnston Co. survey filed Dec 1914

F = Major axis in grade set by J.H. Houlstoncraft previous survey relocated by J.R. Johnston May 1915 Co. Surveyor.

E = Stone in road relocated by testimony of J.R. Johnston & others excepted

G = Stone in road set equal distant on road line from F & H by J.R. Johnston Co. Surveyor May 1915

H = stone in grade relocated by testimony of owners of adjoining land and measured May 1915

I = stone set equal distant from B & D on road line by J.R. Johnston Co. Surveyor

Apr. 29-1931 found old corner and placed gray stone on top of it 14x14x16 and small blue stone on top of the gray 6x6x10 painted outside cor. of bridge rails 211 both sides of W.H.

"B" Stone: R.P. Tack in Tel. pole SE in school yard 41⁶: R.P. Tack in Blazed Tree one of 3 Trees in one stump west on Line 36³

"H" Stone: R.P. Tack in Blazed tel pole NE 48⁵: R.P. Tack in cor. fence post west on Line. (See N.E. Cor. Sec. 19-108-41)

"G" Stone: R.P. Tack in cor. fence post south on Line 34²: R.P. Tack in Blazed tel pole SE 46⁵

"C" 3/4 Bridge Bolt above stone: R.P. top steel cor. post east on R.P. Nail in 2x2 hub 50' south on west side of fence line R.P. Nail in 2x2 hub 100' S. on west side of fence line.

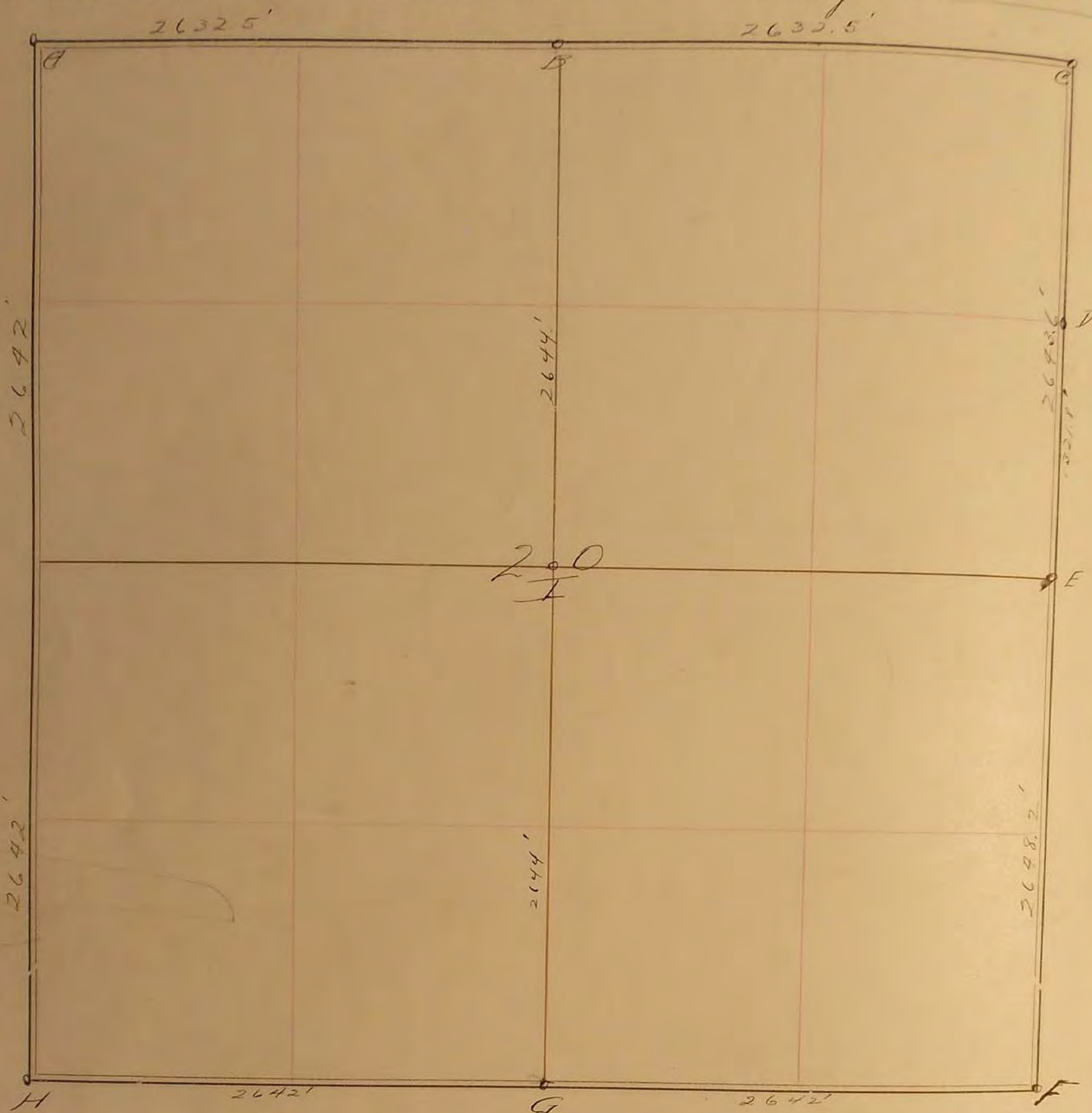
"E" Placed Con. Men. with Iron Pin above. R.P. nails in Road 200' 300' south of corner.

"I" April 4, 1930 Cent. Sec. Located stone 1.5' below gravel grade; placed steel fence post above stone: R.P. N.E.C., P.P., NW 55²³; R.P. N.E.C. Stamp S.H. 64⁴⁰

Record of this survey made June 19-1915 J.R. Johnston Co. Surveyor at Muncie Co.

SURVEY No. _____

Section 20 Town 108 Range 41



FIELD NOTES.

- A = Iron stake in grade, put in on stone previously set, relocated by testimony of Peter Hobert & others. By J.R. Johnston Co Surveyor Elect Dec 1914
- B = Stone, set equidistant on line between C & A. set by J.R. Johnston Co Surveyor May 1915
- C = Stone, with L cut in it, in road, located by testimony of J.R. Johnson & others.
- D = $\frac{1}{8}$ stone, set equidistant on true line between C & E, by J.R. Johnston Co Surveyor Elect Dec 1914
- F = Wagon axle in grade set by J.W. Wadlee Crofton previous survey, relocated by J.R. Johnston in May 1915 Co Surveyor
- E = stone in road, relocated by testimony of J.R. Johnson & others, accepted ¹⁹¹⁵
- G = stone in road, set equidistant, from F & H by J.R. Johnston Co Surveyor 1915
- H = stone in grade, relocated by testimony of owners of adjoining lands and measurements May 1915.
- I = stone set equidistant from G & B on true line by J.R. Johnston Co Sur May 1915

Recod of this survey made, June 17, 1915

Apr. 29, 1931
 A. found old cor. and placed grey stone on top of it. 14x14x16 and small blue stone on top of the grey 6x6x10, painted. 5 outside cor of barbed rails 21.1 both sides

J.R. Johnston Co Surveyor
 May 1915
 May 1915